

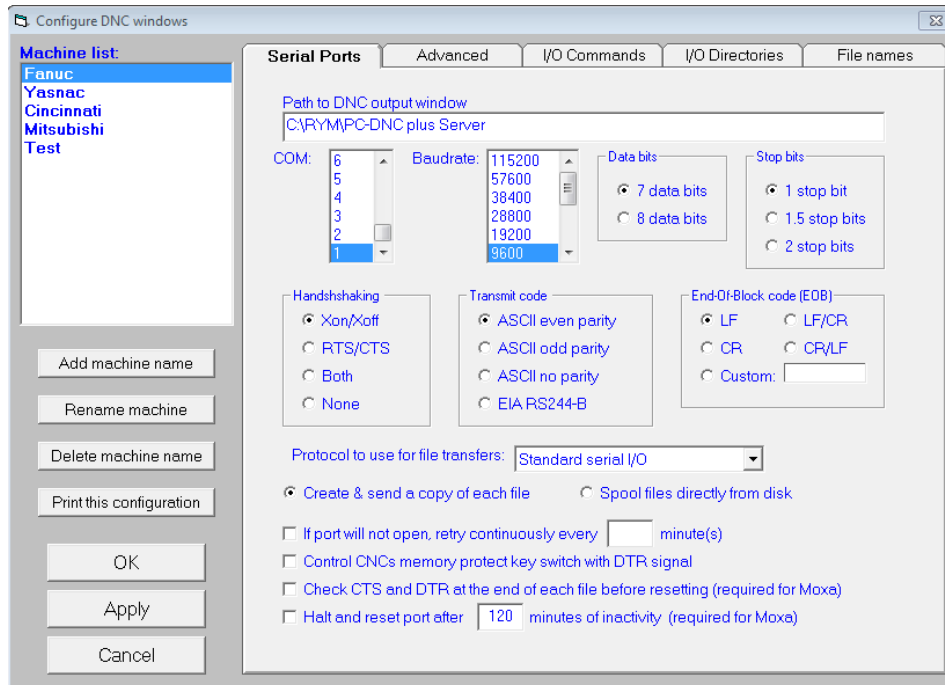


PC-DNC FAQs

Making our customer's lives easier.

Adding New Machine to PC DNC Plus

To add a machine and configure machine parameters, choose CONFIGURE / DNC Windows.



Click ADD MACHINE NAME and enter appropriate settings for your machine control. Always copy config from another machine so that the basic defaults are set properly, then modify settings for specific machine using the information on the link below for CNC configs. Repeat for additional machines. To get assistance with parameters for common CNC controls, visit

http://support.rym.com/CNC_Configs.aspx, select your CNC Control from the pull-down menu. Click OK

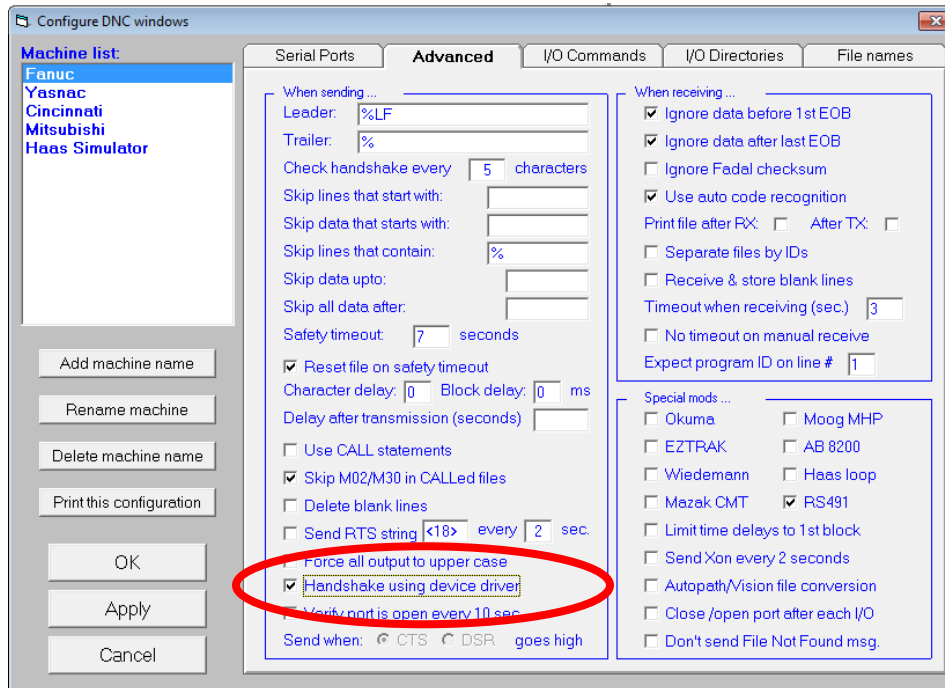
When using an external serial device server, you must also go to Configure/DNC Windows. Check “Handshake using device driver.”

In addition to the configuration settings you will have to assign the appropriate COM port for each machine. Check the Windows Device Manager/Ports to determine the new Com Port number of the device you just installed.



PC-DNC FAQs

Making our customer's lives easier.



Enter directory paths for programs for each machine under the I/O Directories Tab.

