



PC-DNC FAQs

Making our customers' lives easier.

Installing Driver for Control Boxes

Locate latest driver from Control Website for your device and operating system using this link:

<http://downloads.control.com/html/default.htm>

Launch the .msi file that was downloaded, then click Run.

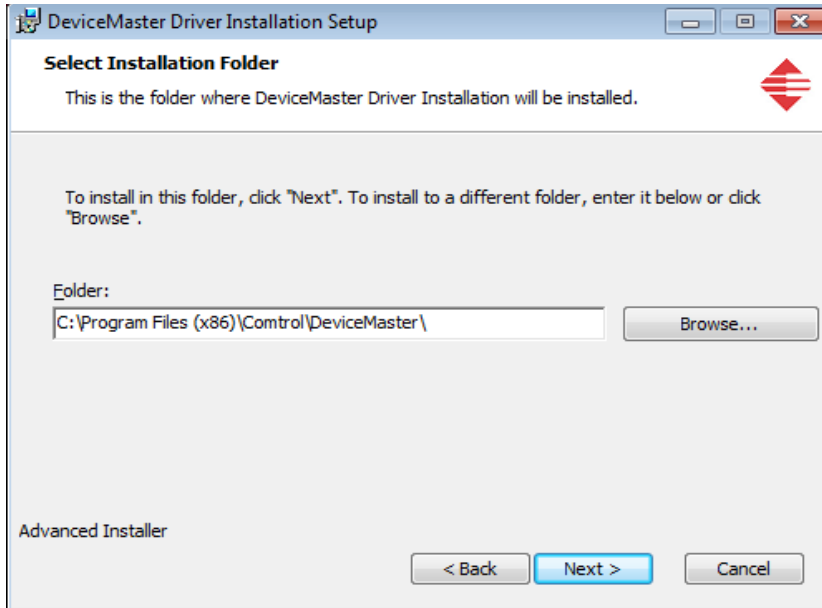




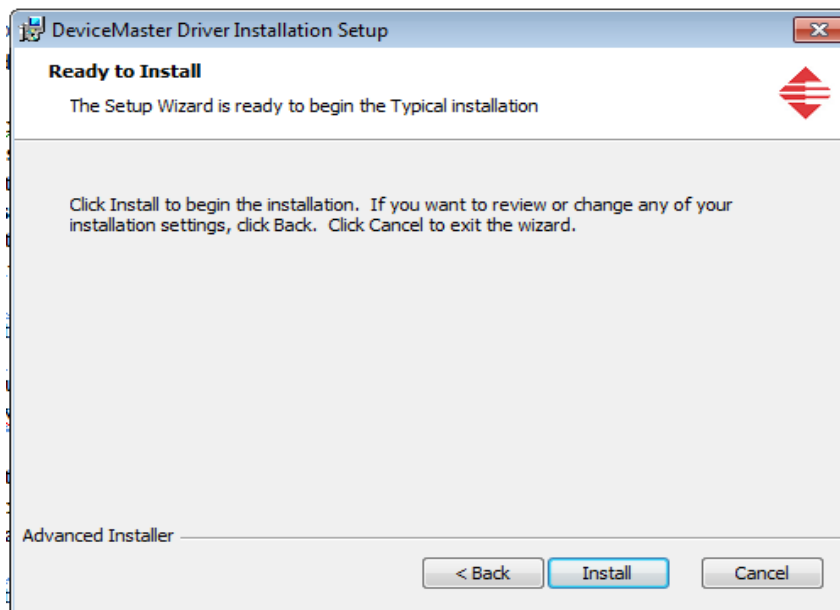
PC-DNC FAQs

Making our customers' lives easier.

Confirm file location for installation:



Click Next



Click Install



PC-DNC FAQs

Making our customers' lives easier.



Make sure “Launch Devicemaster Driver Installation” is checked. Click Finish.



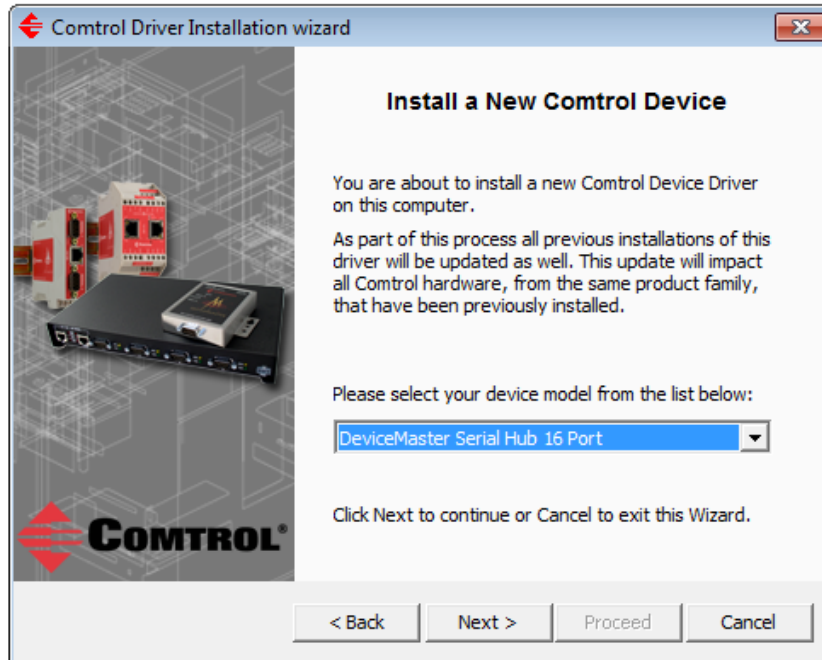
Click Next

Suburban Machinery Software, Inc.
37777 Harlow Drive, Willoughby Ohio 44094
(440) 951-8974 www.pc-dnc.com

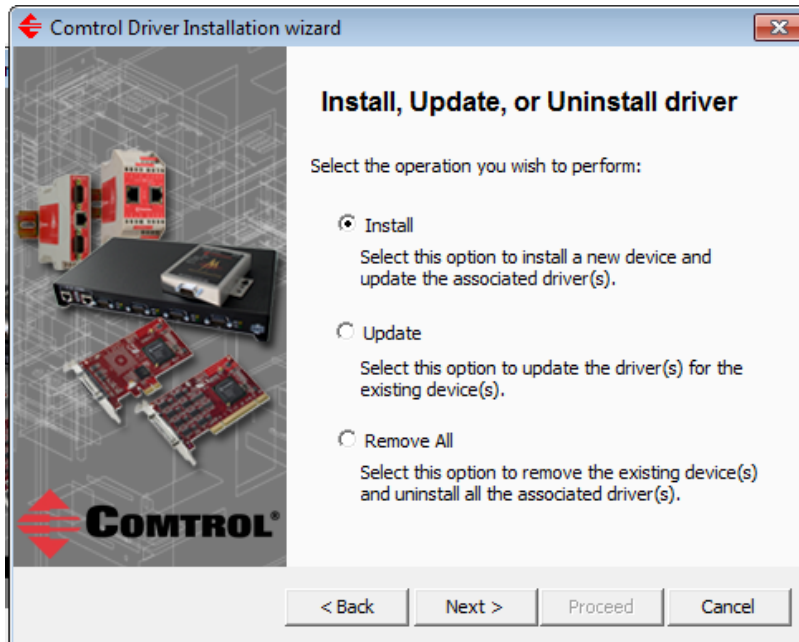


PC-DNC FAQs

Making our customers' lives easier.



From the pull-down list, select the Devicemaster that you're installing

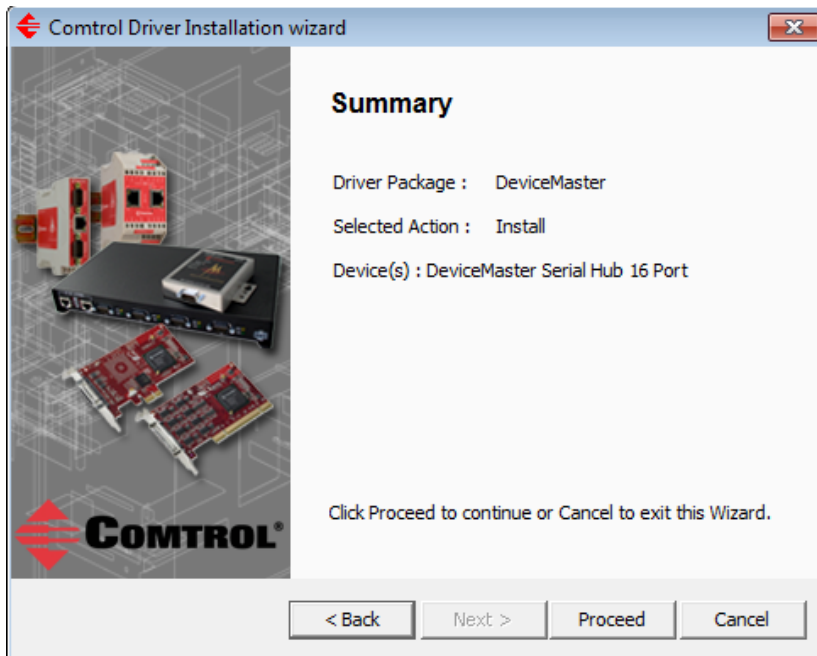


Select the option button to Install, then click Next

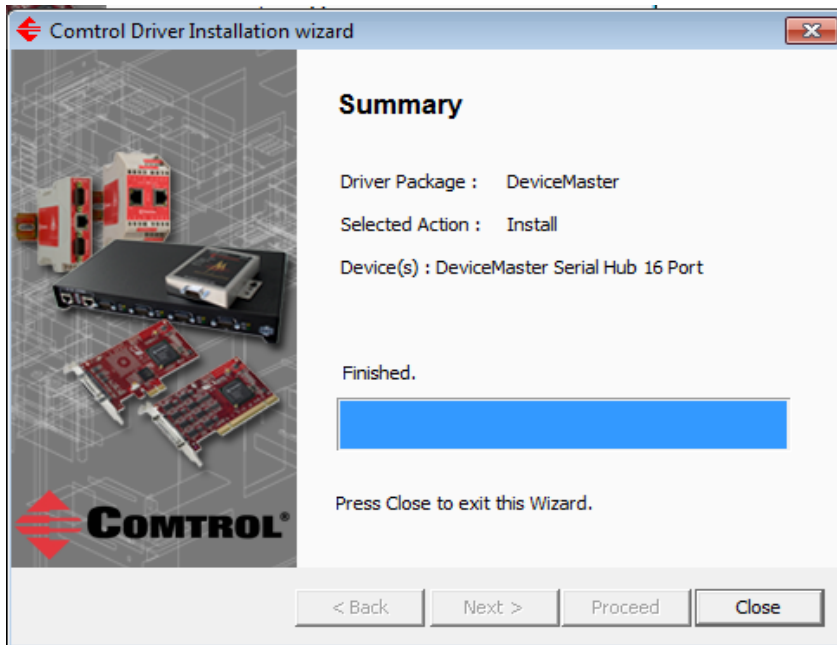


PC-DNC FAQs

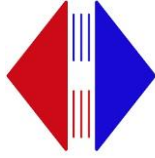
Making our customers' lives easier.



Click Proceed



Click Close (see next page)



PC-DNC FAQs

Making our customers' lives easier.

The driver will be installed for the number of ports that the device has and you should see a message indicating your device is ready to use flash in the lower right corner of your screen as each Com Port is installed. It will do this 16 times for a 16 port device. Do not hit Cancel during this process or the ports will get installed out of order and it will cause problems when assigning ports to devices.

To install a second Control device, do not rerun the msi file. Instead go to Start/All Programs/Control/Device Installation Wizard and the follow steps above.

Once the driver is installed, you need to go into the Windows Device Manager and enter the Mac address for each device you installed. To access the Device Manager:

In Windows XP:

Right click on My Computer
Properties
Hardware tab
Device Manager button

In Windows 7:

Windows Start Button
Right Click on Computer
Properties
Device Manager
nd and expand the Multiport Serial Adapter section
Locate the device, right click, choose Properties
Choose Network Connections tab
Select MAC mode (this runs faster than IP mode and we recommend MAC mode)
Enter the MAC address from the bottom of your unit in the same format as it appears (space between every 2 digits of the MAC address)

Click OK



PC-DNC FAQs

Making our customers' lives easier.

Find and expand the Multiport Serial Adapter section

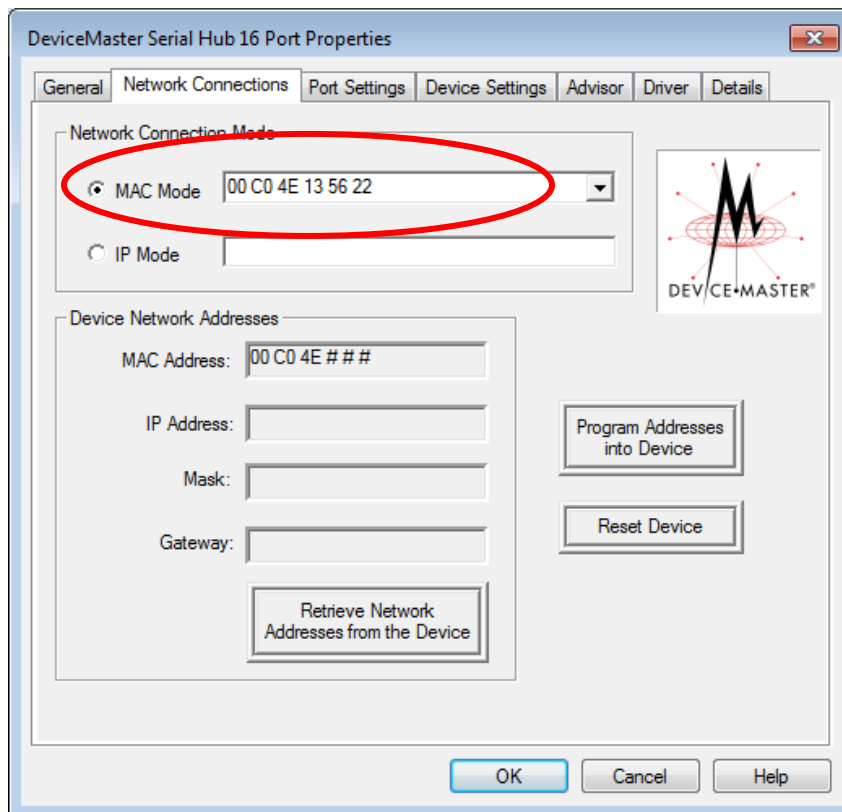
Locate the device, right click, choose Properties

Choose Network Connections tab

Select MAC mode (this runs faster than IP mode and we recommend MAC mode)

Enter the MAC address from the bottom of your unit in the same format as it appears (space between every 2 digits of the MAC address)

Click OK



If the connection is made correctly, the MAC address will then populate under the Device Network Addresses Field in the section below the Network Connection Mode. Now go to the "Port Settings Tab" and note/document the COM ports assigned to this device. You will need these to assign COM ports in your communication software.