



PC-DNC FAQs

Making our customers' lives easier.

Quatech Device Installation

If the driver that comes on CD enclosed with the device is version 2.20, you can use it. If it is an outdated version, download and extract the recommended driver. We recommend the 2.0 version of the Quatech driver for Windows 7.

<http://www.quatech.com/ManualsDriversFirmware/Communication/sds200.zip>

Please visit this link for Windows 8 Drivers: <http://quatech.com/support/drivers.php>.

Connect device to network and turn on.

From Windows Explorer, launch qtewizard.exe from the location where you extracted the driver files.

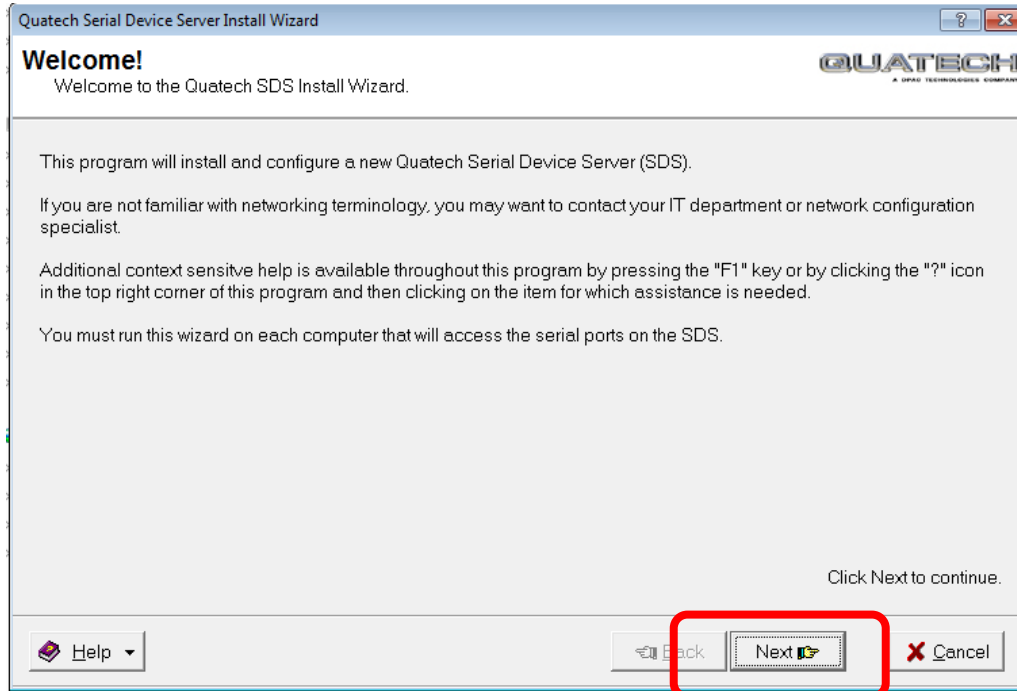
File Name	Date Modified	Type	Size
Driver	8/2/2011 10:57 AM	File folder	
borIndmm.dll	8/2/2011 10:57 AM	Application extens...	25 KB
cc3250mt.dll	8/2/2011 10:56 AM	Application extens...	1,462 KB
CfgReg.dll	8/2/2011 10:56 AM	Application extens...	81 KB
history.txt	8/2/2011 10:56 AM	Text Document	4 KB
qtetools.exe	8/2/2011 10:56 AM	Application	175 KB
qtewizard.chm	8/2/2011 10:56 AM	Compiled HTML ...	68 KB
qtewizard.exe	8/2/2011 10:56 AM	Application	627 KB
QTSetup64.exe	8/2/2011 10:56 AM	Application	220 KB
readme.txt	8/2/2011 10:56 AM	Text Document	7 KB
vcl50.bpl	8/2/2011 10:56 AM	BPL File	1,976 KB
vclx50.bpl	8/2/2011 10:56 AM	BPL File	243 KB

At Welcome screen, click *Next*.

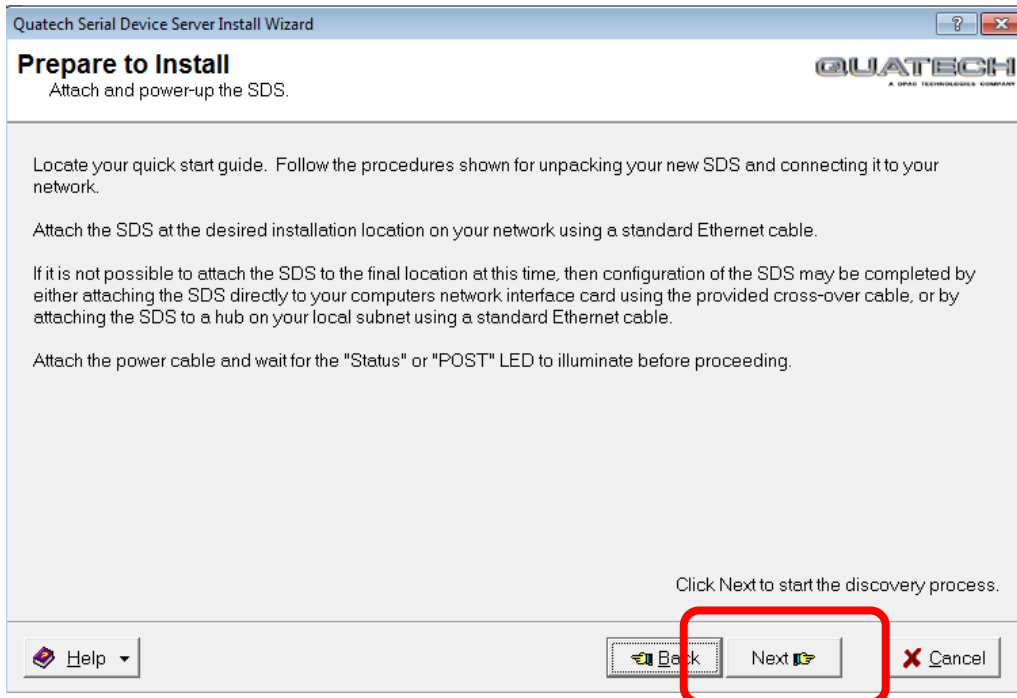


PC-DNC FAQs

Making our customers' lives easier.



Click *Next*.



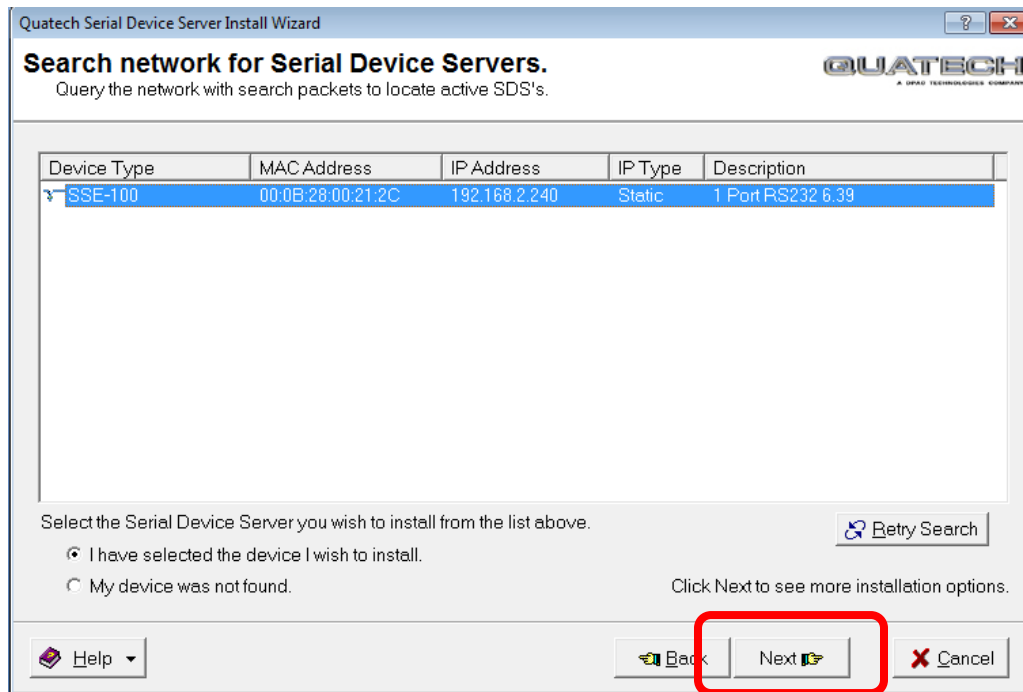
Suburban Machinery Software, Inc.
37777 Harlow Drive, Willoughby Ohio 44094
(440) 951-8974 www.pc-dnc.com



PC-DNC FAQs

Making our customers' lives easier.

Click on the new device that shows up in the list. If you have more than one Quatech device, there will be several units on the list. You will need to determine which one is the new one. Click *Next*

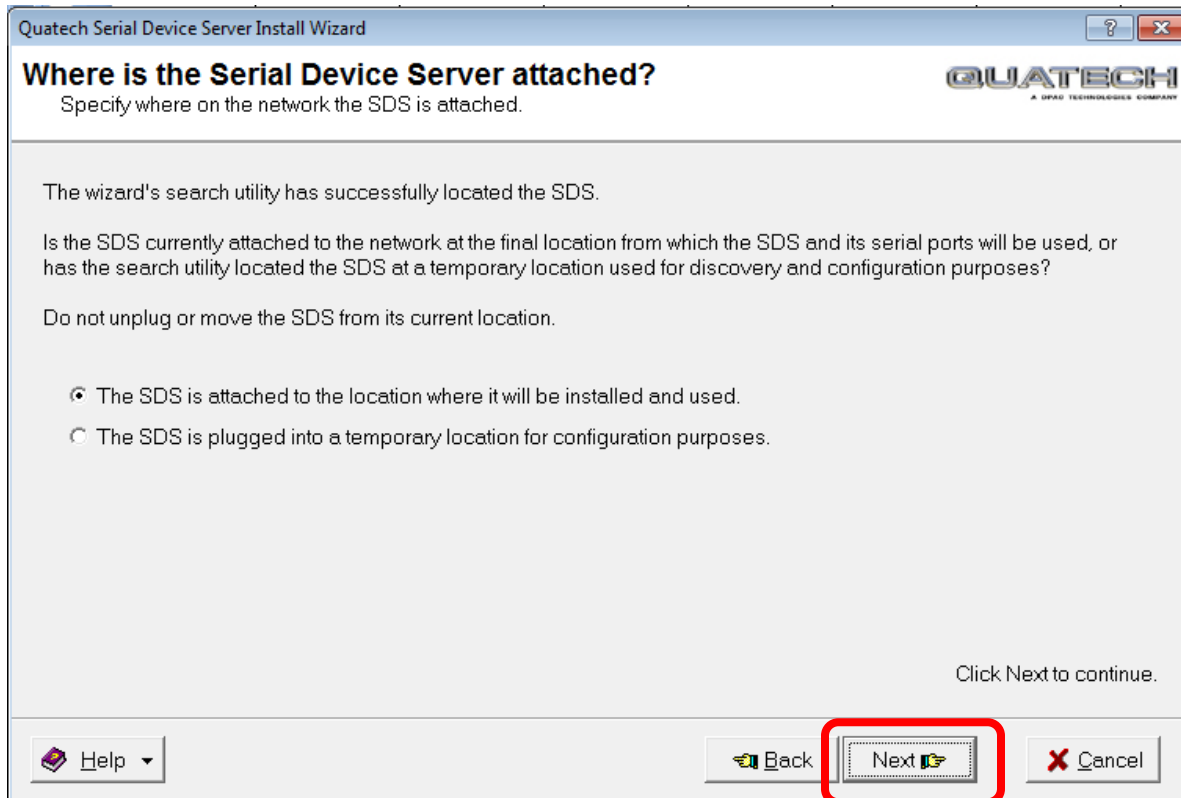


Choose "The SDS is attached to the location where it will be installed and used."
Click Next

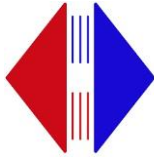


PC-DNC FAQs

Making our customers' lives easier.

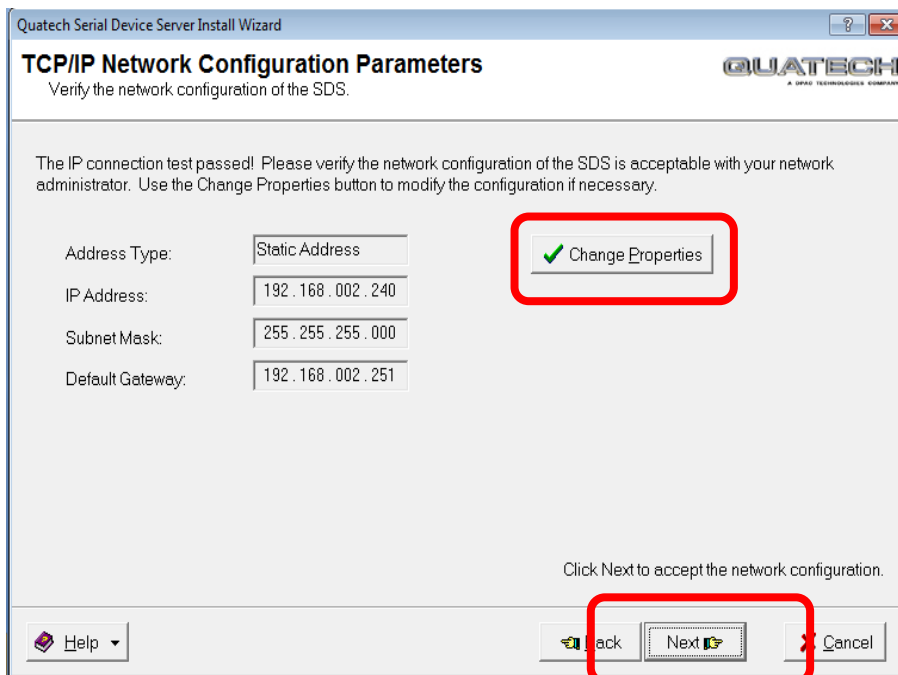
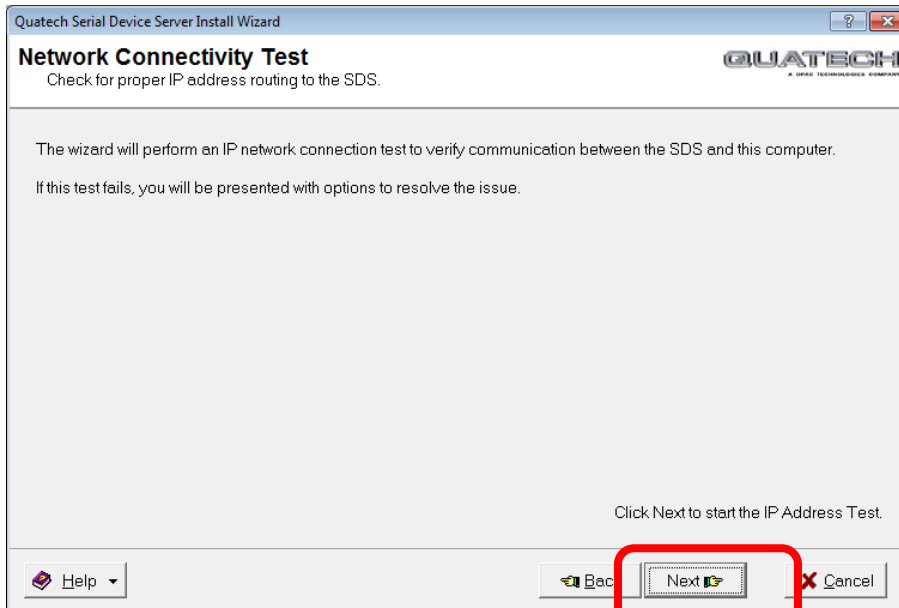


Click *Next*



PC-DNC FAQs

Making our customers' lives easier.



Click "Change Properties"



PC-DNC FAQs

Making our customers' lives easier.

SDS - Internet Protocol (TCP/IP) Properties

The SDS can have these settings assigned automatically if your network uses a DHCP server. Otherwise, ask your network administrator for the appropriate values to enter below.

Obtain an IP address automatically from DHCP server.

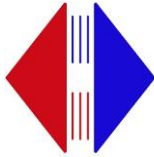
Use the following static IP address

IP Address:	<input type="text" value="192.168.002.240"/>
Subnet Mask:	<input type="text" value="255.255.255.000"/>
Default Gateway:	<input type="text" value="192.168.002.251"/>

Click on *“Use the following static IP address”*

Fill in your IP configuration. Click *Send*, Click *OK* to restart then wait 45 seconds before Clicking *OK* to continue.

Verify corrected IP address is now showing, then click *Next*



PC-DNC FAQs

Making our customers' lives easier.

Quatech Serial Device Server Install Wizard

TCP/IP Network Configuration Parameters

Verify the network configuration of the SDS.

The IP connection test passed! Please verify the network configuration of the SDS is acceptable with your network administrator. Use the Change Properties button to modify the configuration if necessary.

Address Type:

IP Address:

Subnet Mask:

Default Gateway:

Click Next to accept the network configuration.

Help Back **Next** Cancel

Click *OK* to re-run the network connectivity test. Click on *Next*

Quatech Serial Device Server Install Wizard

Install the Device Drivers.

Create new SDS serial ports in Windows.

SSE-100 Single-Port RS-232 Serial Device Server

The wizard is now ready to begin installation of the device drivers which allow the computer to use the serial ports on the SDS.

After the SDS device drivers are installed, Windows will automatically install the new serial ports as Plug-and-Play devices.

Click Next to start the driver installation process.

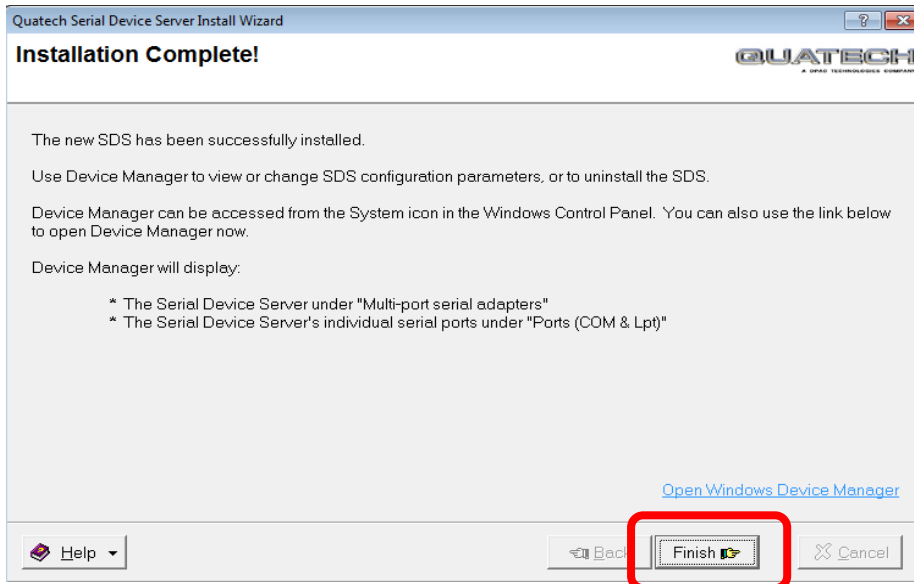
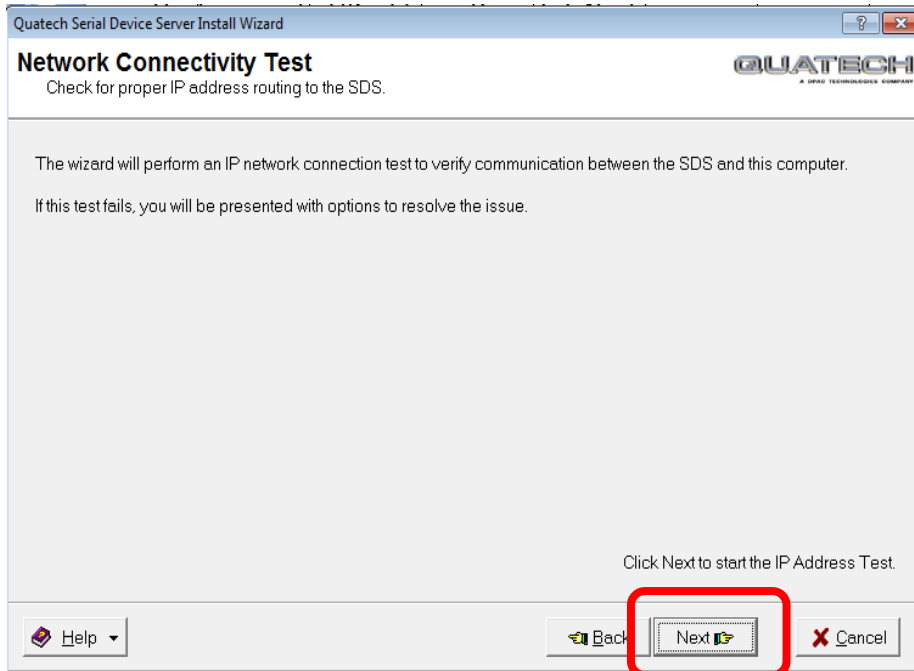
Help Back **Next** Cancel

Click *Next*



PC-DNC FAQs

Making our customers' lives easier.



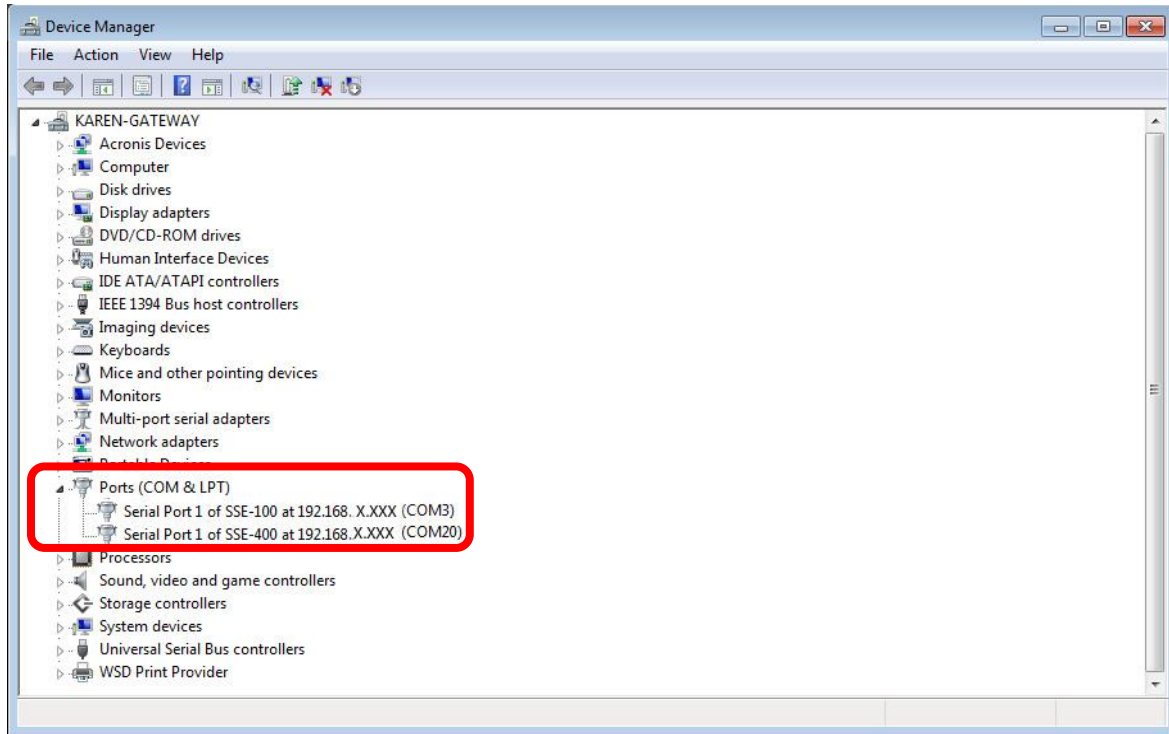
If you are installing a multiple port device, you will see activity in the lower right corner of your computer screen indicating each port being installed. When all Ports are configured, you will see an indicator that your device is ready to use.



PC-DNC FAQs

Making our customers' lives easier.

After the device is installed, you will need to make some changes in the Device Manager. Access the Device Manager by right clicking on My Computer, select Properties/Hardware/Device Manager. Or Start/Control Panel/System/Hardware/Device Manager. Once you have the Device Manager open, open the Ports section (click on the + sign next to Ports if it is not already expanded).



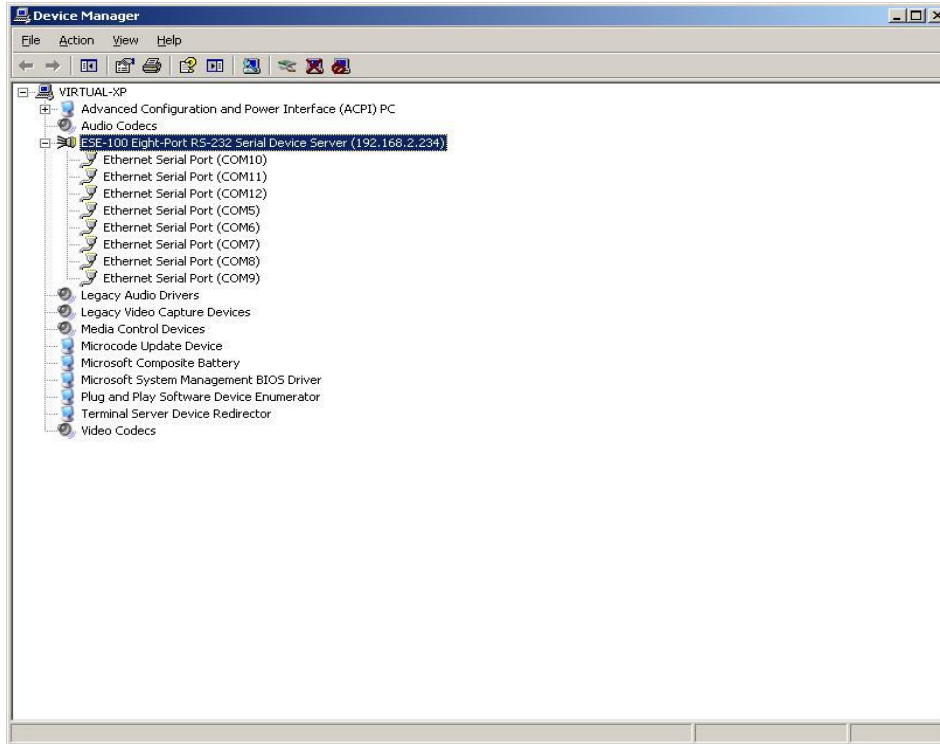
You can now see the COM port numbers attached to each port on each hub (If you have more than one hub).

Double click on the Serial Device Server icon to get to the Properties page



PC-DNC FAQs

Making our customers' lives easier.

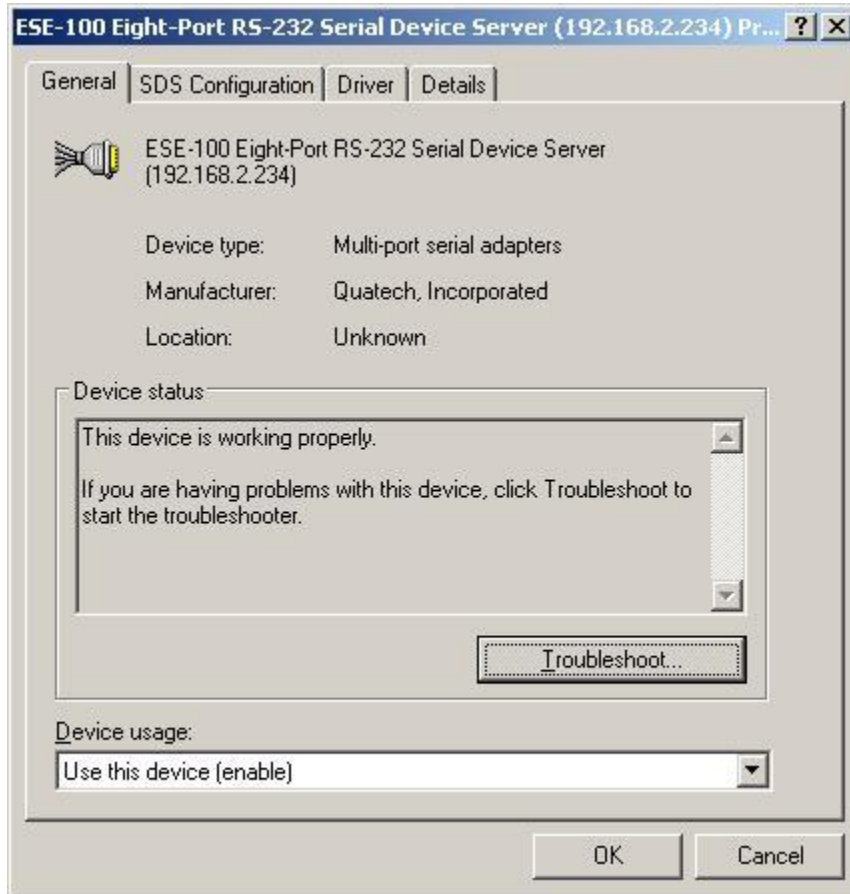


Suburban Machinery Software, Inc.
37777 Harlow Drive, Willoughby Ohio 44094
(440) 951-8974 www.pc-dnc.com



PC-DNC FAQs

Making our customers' lives easier.

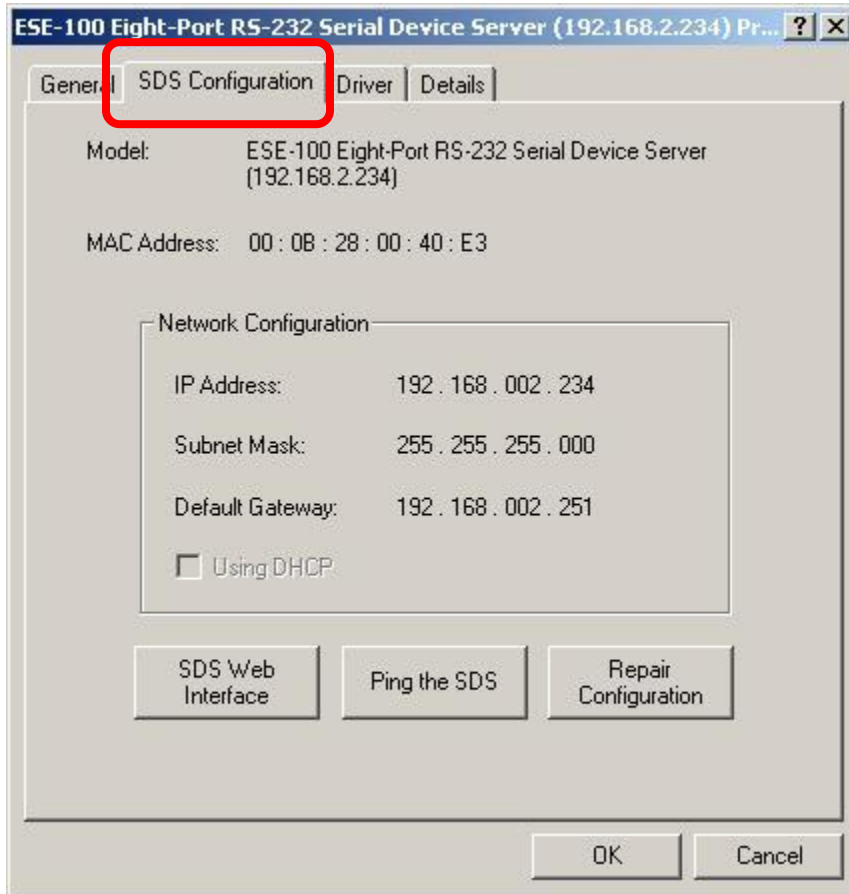


Select *SDS Configuration* tab, then click *SDS Web Interface*

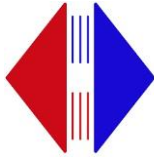


PC-DNC FAQs

Making our customers' lives easier.

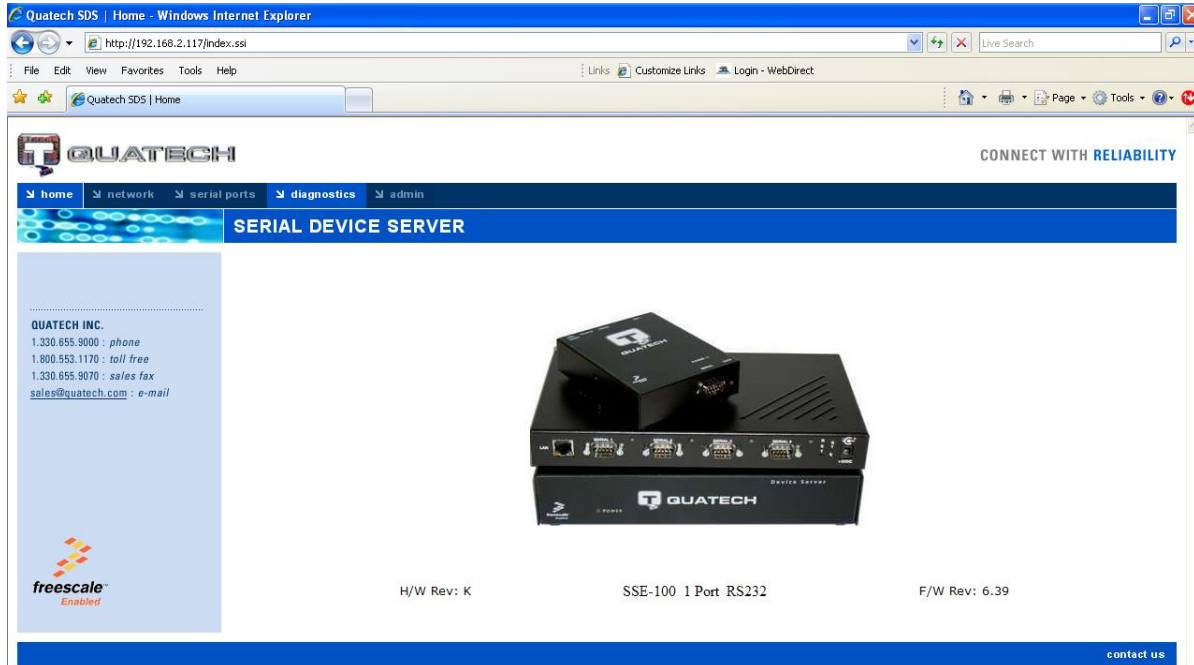


You will be taken to the device management console via Internet Explorer or your default browser.

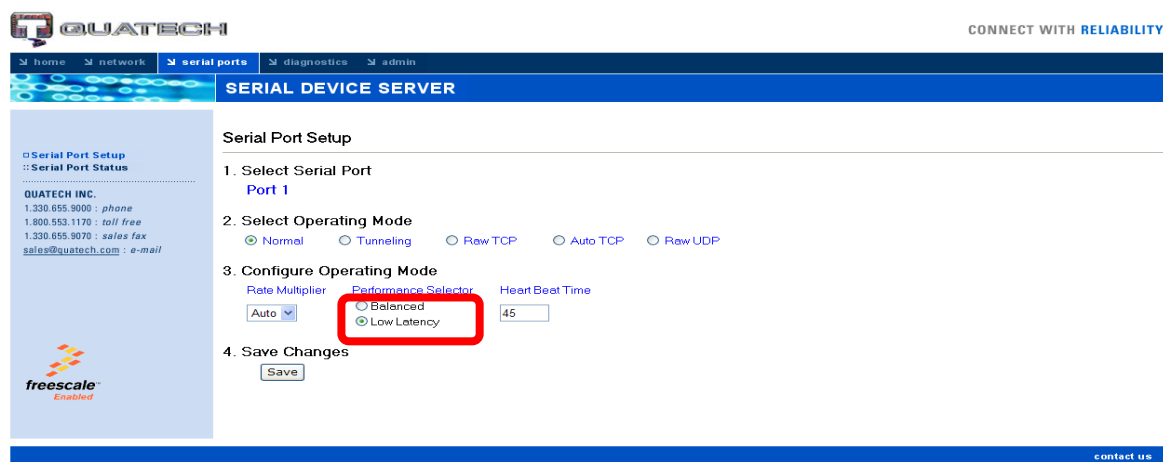


PC-DNC FAQs

Making our customers' lives easier.



Click on the *Serial Ports* tab. Under *3. Configure Operating Mode*, click *Low Latency*. Then *Save* changes. Do this for each port for multiple port boxes.



You are now ready to input the COM port numbers into the software and start using your device.

If your device is wireless, proceed to the next page for the wireless settings.

Suburban Machinery Software, Inc.
37777 Harlow Drive, Willoughby Ohio 44094
(440) 951-8974 www.pc-dnc.com



PC-DNC FAQs

Making our customers' lives easier.

Wireless Mode

To use wired/wireless device in wireless mode (1 and 2 port wireless only (models SSEW-100D and DSEW-100D). Access the Network tab. Under Wireless Setup, enter SSID (must match SSID assigned to Wireless Access Point for your network. Mark circle next to WPA-PSK passphrase. Click *Submit*. Unplug network cable. Reset device.

QUATECH
home network serial ports diagnostics admin
SERIAL DEVICE SERVER

Network Setup

Network Setup
 SNMP Setup

QUATECH INC.
1.330.655.9000 : phone
1.800.553.1170 : toll free
1.330.655.9070 : sales fax
sales@quatech.com : e-mail

freescalar
Enabled

LAN Setup

Static
IP Address 192 , 168 , 0 , 2
Gateway Address 192 , 168 , 0 , 1
Address Mask 255 , 255 , 0 , 0

DHCP
MAC Address 000B2800212C

Wireless Setup

SSID RYM
Channel 00 (0=Default)
Access Mode
 Infrastructure
 Ad hoc

Wireless Security

Open

WEP
Key Length 64 bit
 128 bit
Key Index 1
WEP Keys (hex) 00 00 00 00 00

WPA-PSK
Passphrase *****