

PC-DNC FAQs

Making our customers' lives easier.

Matrix USB to Serial Data I/O

USB to Serial converter can be used with the Matrix CMT/Tape modes via Data I/O

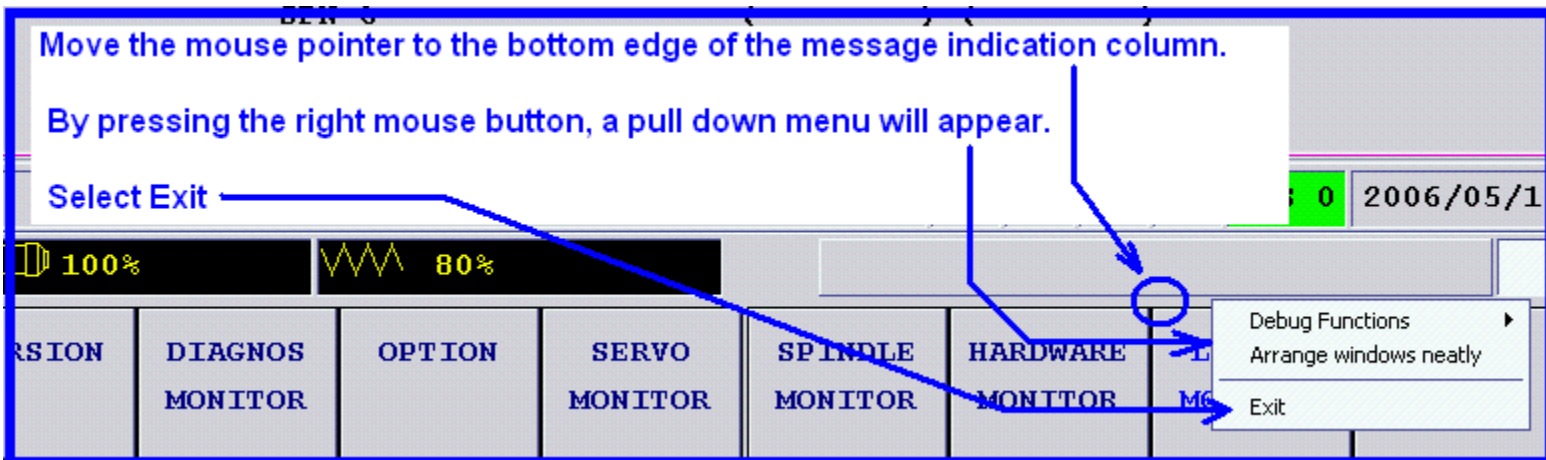
- CMT Mode:
Load CMT Programs into the Matrix
Note: Can't save CMTdata from Matrix to CMT
See Manual #H740S30030E Section 9-1-3
- Tape Mode:
Load, All loading, Punching, All Punching,
Comparing, All Comparing

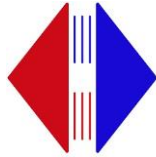
Installing USB to Serial Drivers, Set Parameters & Com Port

1. Shut Down Mazatrol S/W

Correct way of Shutting Down Mazatrol Software

- Press the Diagnos menu key, then Version and the right end menu key. Type "1131" and press input to get into the privileged mode.
- Move the mouse pointer to the bottom edge of the message indication column. By pressing the right mouse button, a pulldown menu will appear.
- Select Exit. See following example:





PC-DNC FAQs

Making our customers' lives easier.

2. Connect USB/Serial Cable
3. Windows will detect new Hardware after USB cable is connected.
4. Follow window prompts to install driver.

Parameters on Matrix to activate CMT/Tape Data I/O Menu Keys

5. Parameter F163 Bits 6 & 7

Bit 6 = Menu on the DATA I/O display (tape)

0: Hidden

1: Displayed

Bit 7 = Menu on the DATA I/O display (CMT)

0: Hidden

1: Displayed

6. Set Com Port to **COM3**

CMT Data I/O:

CMT	
BAUDRATE	19200
DATA BITS	◆
PARITY	◆
STOP BITS	◆
HAND SHAKE	◆
WAIT TIME	◆
FORMAT	◆
SAME WNo.	ALARM
PORT	COM3
CMT 1	0
CMT 2	0
CMT 3	0
CMT 4	0
CMT 5	0
CMT 6	0
CMT 7	0
CMT 8	0
CMT 9	0
CMT 10	0
CMT 11	0
CMT 12	0
CMT 13	0
CMT 14	0
CMT 15	0
CMT 16	0
CMT 17	0
CMT 18	0
CMT 19	0
CMT 20	0
CMT 21	0
CMT 22	0
CMT 23	0
CMT 24	0
CMT 25	00000000
CMT 26	00000000
CMT 27	00000000
CMT 28	00000000
CMT 29	0
CMT 30	0
CMT 31	0
CMT 32	0

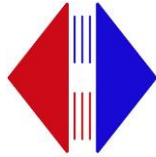


PC-DNC FAQs

Making our customers' lives easier.

Tape Data I/O:

TAPE					
BAUDRATE	19200	TAP1	1	TAP17	0
DATA BITS	8	TAP2	0	TAP18	0
PARITY	NONE	TAP3	0	TAP19	0
STOP BITS	2	TAP4	0	TAP20	0
HAND SHAKE	NONE	TAP5	1	TAP21	0
WAIT TIME	100	TAP6	0	TAP22	0
FORMAT	ISO	TAP7	0	TAP23	0
SAME WNO.	ALARM	TAP8	0	TAP24	0
PORT	COM3	TAP9	76	TAP25	00000000
		TAP10	13	TAP26	00000001
		TAP11	109	TAP27	00000000
		TAP12	122	TAP28	00111010
		TAP13	91	TAP29	10
		TAP14	70	TAP30	30
		TAP15	26	TAP31	0
		TAP16	74	TAP32	0



PC-DNC FAQs

Making our customers' lives easier.

7. Example of MDT
Communication Settings
Tape

CMT

